

2019 ANNUAL REPORT

Bay Area Turning Point, Inc.



About Us

Domestic violence is growing in our community and across the country. It impacts all of us, and Bay Area Turning Point is one of the few local resources combatting this crisis.

WHO WE ARE

Bay Area Turning Point is a center of care for victims of family violence and sexual assault. We provide comprehensive wrap-around services for individuals needing emergency shelter, outreach services and long-term housing.

OUR MISSION

Advocating to end sexual and domestic violence.



OUR GOAL

Provide quality direct services to child and adult victims and families experiencing domestic and sexual violence. Work towards eliminating domestic and sexual violence through prevention and educational services.

Reflections



Dear Friends,

Thank you for your support of Bay Area Turning Point throughout 2019. Each year I am humbled and inspired by the positive impact we have on the lives of the families we serve in local communities.

This past year, we assisted over 9,000 individuals through our hotline, shelter and non-residential programs to help them successfully transition to a life free from violence.

Unfortunately, the demand for our services exceeds our capabilities. In 2019, we were unable to assist more than 2,821 families who called our hotline for shelter, and in Harris County alone, domestic violence homicides have increased more than 40% in the past two years.

Our mission and services must continue to expand to care for our neighbors in need. Thankfully, community partners like you have responded with a 20% increase in financial support and more time invested in volunteer efforts.

As we look to the future, the board and leadership at Bay Area Turning Point are developing strategic goals and new initiatives to build on our current strengths and move our organization forward, advocating to end sexual and domestic violence for generations to come.

A handwritten signature in black ink that reads "Carla Medlenka".

Carla Medlenka
Chair, Board of Directors

A handwritten signature in black ink that reads "Leigh Ann Fry".

Leigh Ann Fry, M.A. Ed.
President & Chief Executive Officer

Serving Our Community



Crisis Intervention

We provide immediate intervention when an individual is in crisis and reaches out for help. The first point of entry is our 24/7 crisis hotline, walk-in or a request by law enforcement or hospital for a sexual assault accompaniment.



Prevention

Bay Area Turning Point believes that we cannot be in a position to only react once violence occurs; we must do everything within our power to stop violence before it has a chance to take hold. Our prevention program is designed to provide life-saving skills to children Pre-K through college.



Restorative Services

Bay Area Turning Point recognizes that each survivor is unique in their journey. We provide client-centered, trauma-informed and empowerment-based services that help each client move to a life that is productive, healthy and free of violence.



Development

The Development Department is robust in its efforts to connect each member of the community to Bay Area Turning Point. As a community we can ensure the safety of victims, their children and families.



Awareness

Bay Area Turning Point is working to move the issue of domestic and sexual violence and the trafficking that often accompanies it out of the shadows.

Our Impact



465
Shelter Clients

94,676
Meals and
Snacks
Served

93 Events;
Reached
3,072 People

5,038
Restorative
Hours *

9,442
Hotline Clients

742 Non-
Residential
Clients

* Counseling, Case Management
and Support Group Hours

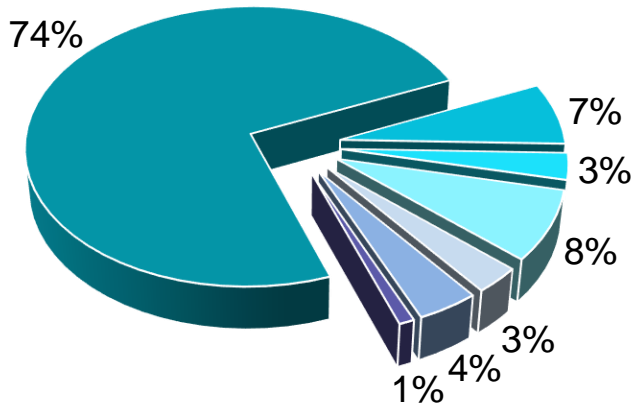
More than providing life-saving emergency services to victim families, Bay Area Turning Point focuses on a family's need to rebuild their shattered lives.



By The Numbers



Where Our Funding Comes From



REVENUE

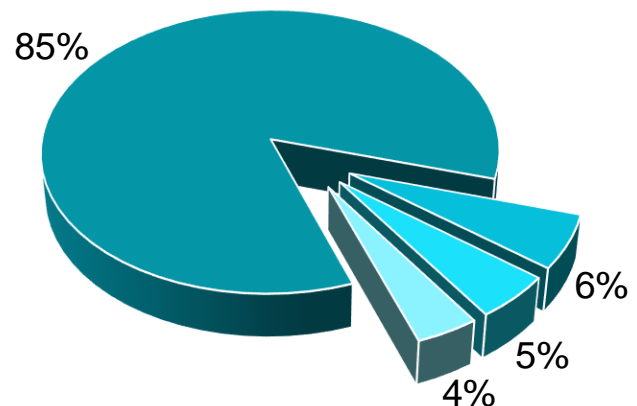
Government Grants	\$2,089,357
United Way	200,314
• Greater Houston	169,864
• Greater Baytown Area and Chambers County	30,450
Private Foundations	\$93,333
Community Contributions	210,108
Special Events	96,986
Resale Shop*	103,651
Other Income	28,001
Total	\$2,821,750

How We Use Our Resources

* Resale Shop closed Sept. 2019

EXPENSES

Programs	\$2,352,166
Maintenance & General	154,713
Fundraising	142,558
Resale Shop*	114,088
Total	\$2,763,525



“Unfortunately, the demand for our services exceeds our capabilities. In 2019, we were unable to assist more than 2,821 families who called our hotline for shelter.” Leigh Ann Fry, President & CEO

Success Stories

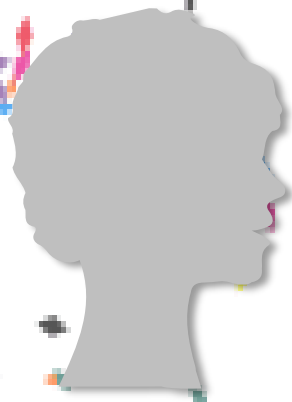


“Bay Area Turning Point helped me get housing and has been helping me ever since. They have helped me with emotional problems, finances and even clothes. I am at such peace knowing that there are people out there willing to help.”
Name withheld

Claire lived in fear that her batterer would assault her again. She reached out to Bay Area Turning Point for counseling services. After six months of therapy, Claire had regained her sense of security, no longer felt helpless and anxious, started opening herself up to making new friends and slowly started trusting again. Claire realized that the assault is something she will always remember; however, she will not let it take over her life. She learned coping strategies to help her feel strong and empowered when she is feeling sad, she regained her self-confidence and felt beautiful again. Claire realized that she is a survivor and through the assistance of BATP she can overcome any obstacles placed in her way.



Through the legal advocacy program, Georgia was reimbursed for her medical bills and loss of wages by Crime Victims Compensation. Georgia began attending counseling with Bay Area Turning Point and started her next chapter free from violence. Georgia often checks in with her advocate to say hello and express her gratitude.



Senior Staff

Leigh Ann Fry, President & CEO
Brenda Sykes, Vice President and COO
Peggy Cooper, CFO
Sybil Winters-Little, Operations Director
Wykesha Dixon, Programs Director
Corey Phillips, Compliance Director

2019 Board of Directors

Carla Medlenka
Chair

Cheryl Germain
Vice Chair

Daniel Garrison
Treasurer

James Overman
Assistant Treasurer

Elaine Renola
Secretary

Sherrie Matula
Past Chair

Presley Broussard

Sherilyn Oliver

Lee Swindler



HOT LINE
281-286-2525




Main Office

201 S. Walnut
Webster, TX 77598
281-338-7600

Mailing Address

P.O. Box 58537
Houston, TX 77598

bayareeturningpoint.org

 facebook.com/bayareeturningpoint
 twitter.com/batp_tx
 instagram.com/bayareeturningpoint



United Way of Greater Houston



United Way of Greater
Baytown Area &
Chambers County